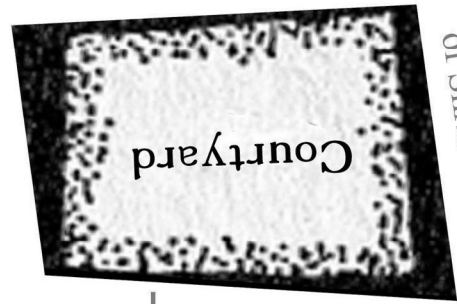
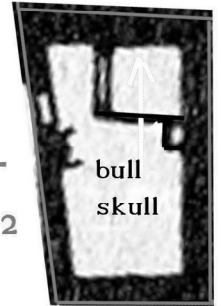
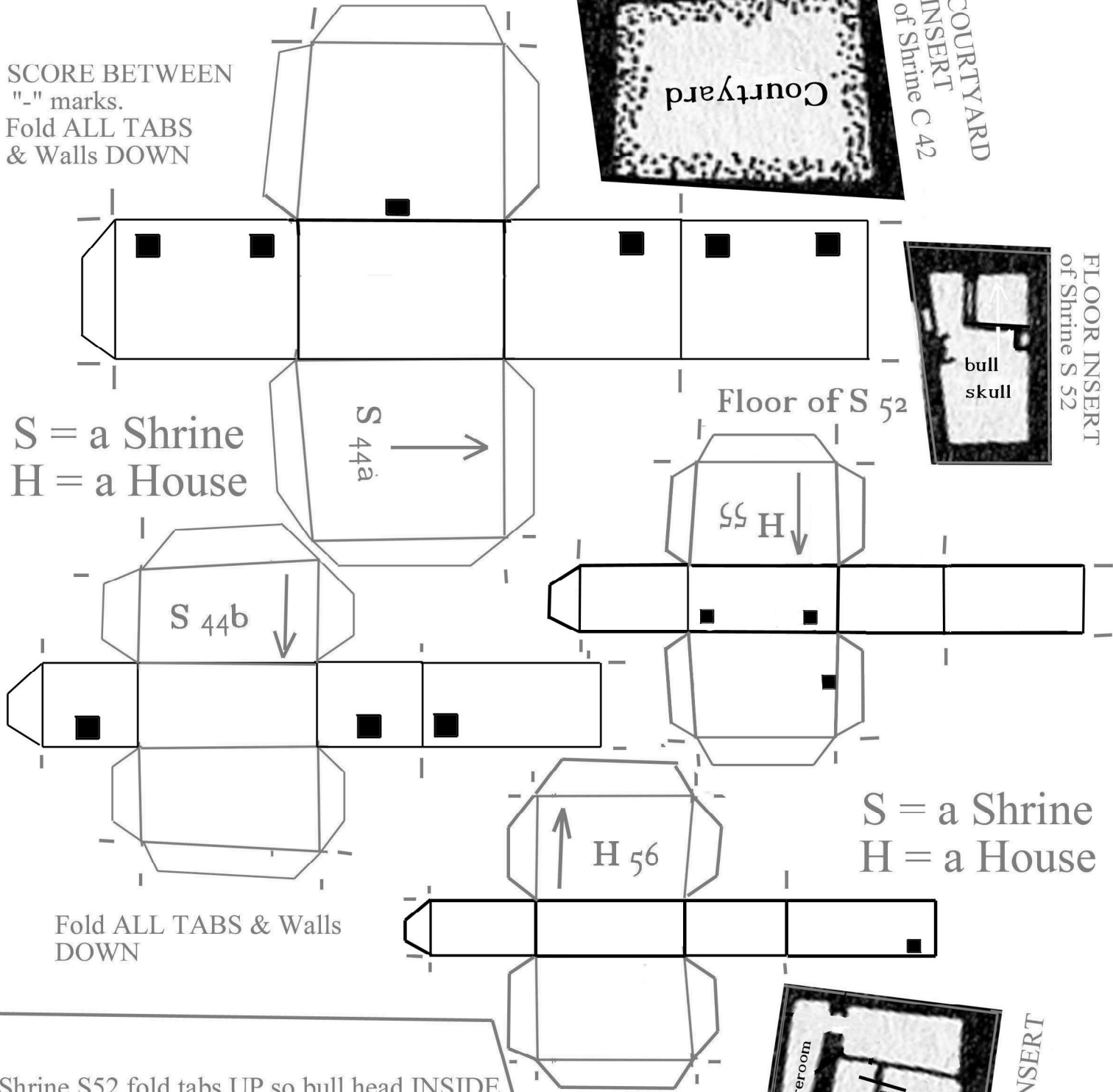


SCORE BETWEEN  
"-" marks.  
Fold ALL TABS  
& Walls DOWN



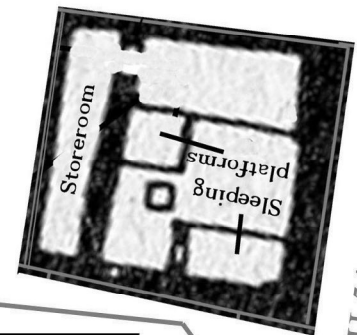
COURTYARD  
INSERT  
of Shrine C 42

S = a Shrine  
H = a House



FLOOR INSERT  
of Shrine S 52

S = a Shrine  
H = a House



H 54 floor INSERT

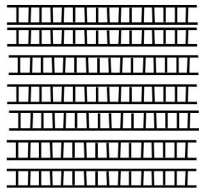
H 54 fold tabs  
DOWN

H 54

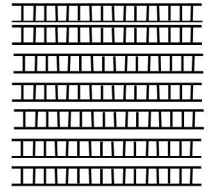
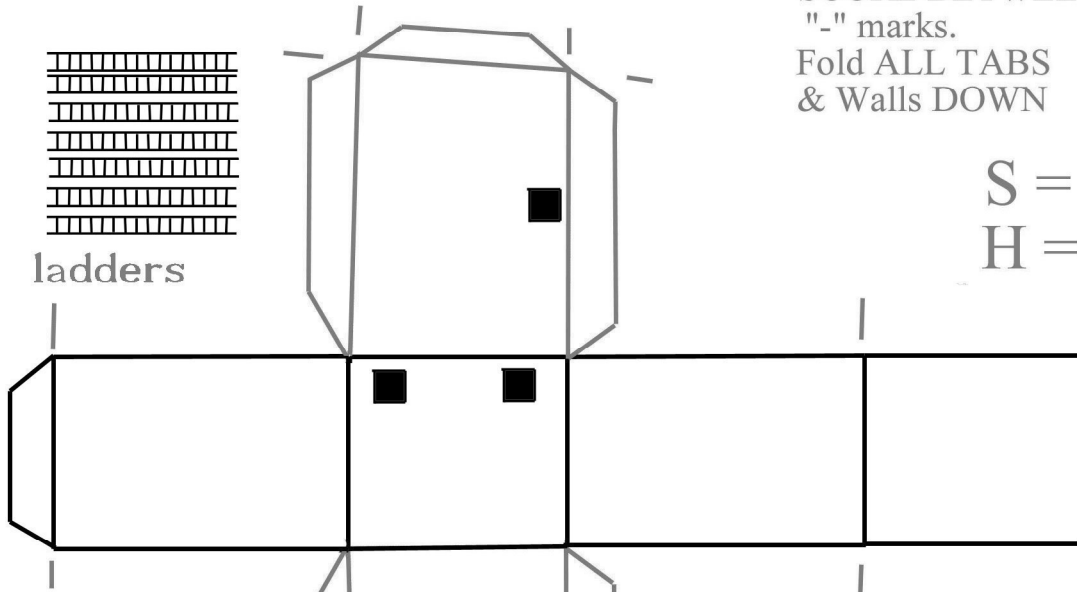
Courtyard C42 fold tabs DOWN

SCORE BETWEEN  
 "-" marks.  
 Fold ALL TABS  
 & Walls DOWN

S = a Shrine  
 H = a House

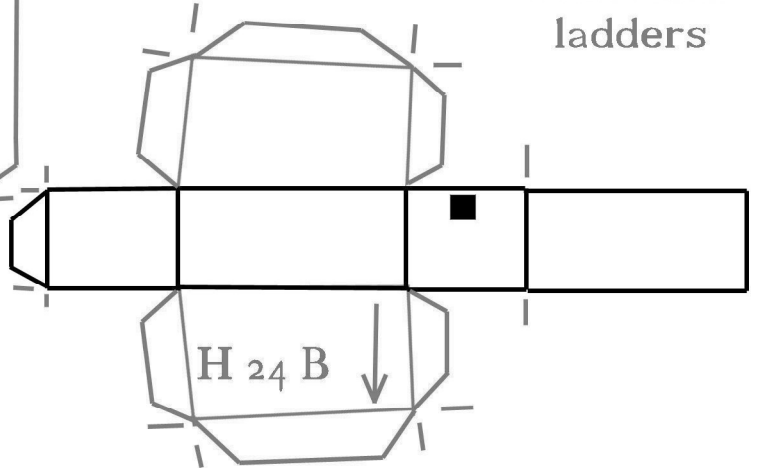
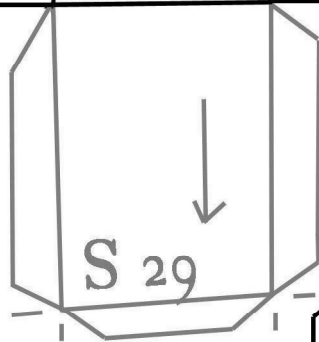


ladders

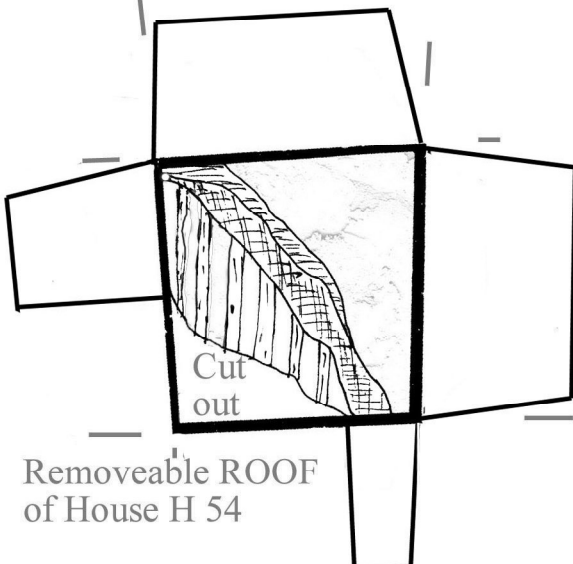
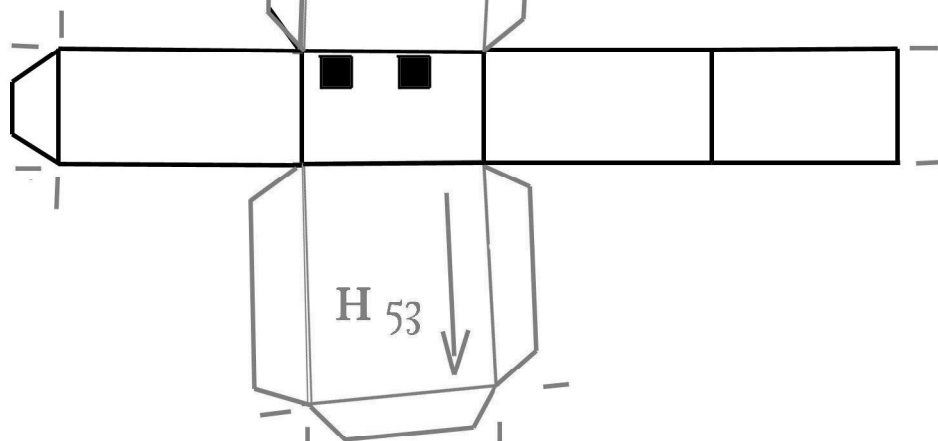
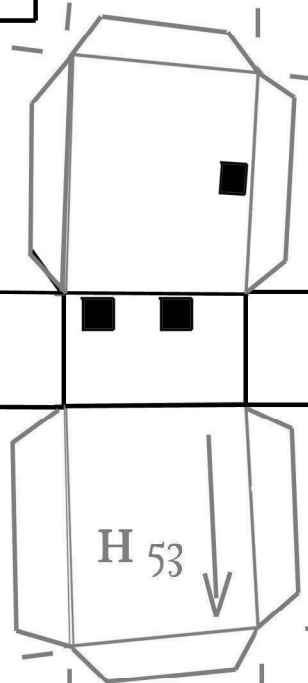
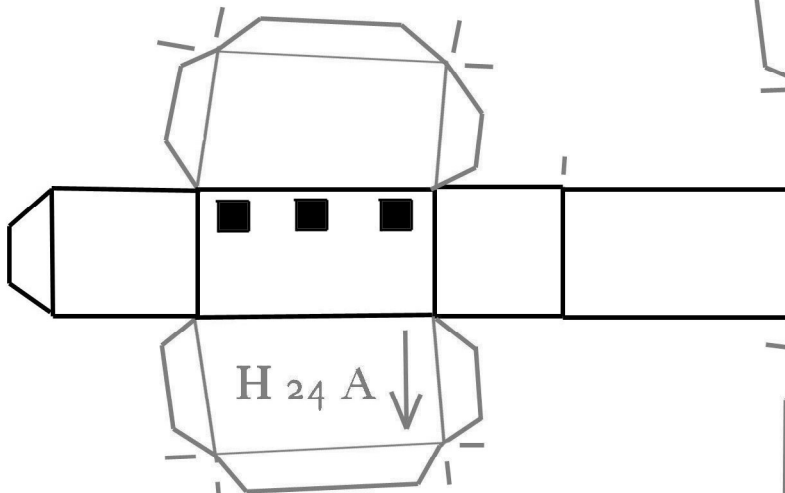


ladders

S = a Shrine  
 H = a House



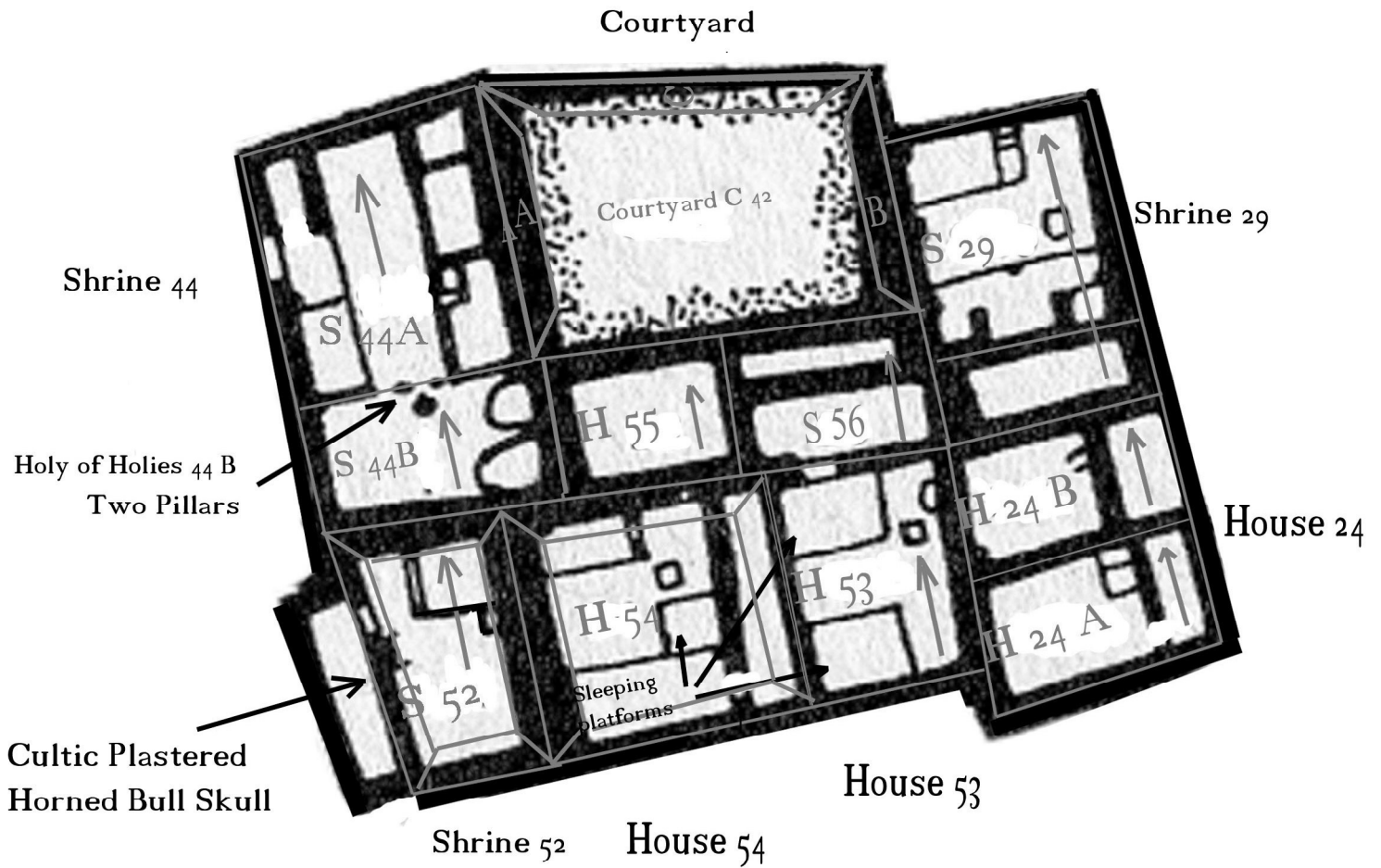
S = a Shrine  
 H = a House



Removeable ROOF  
 of House H 54

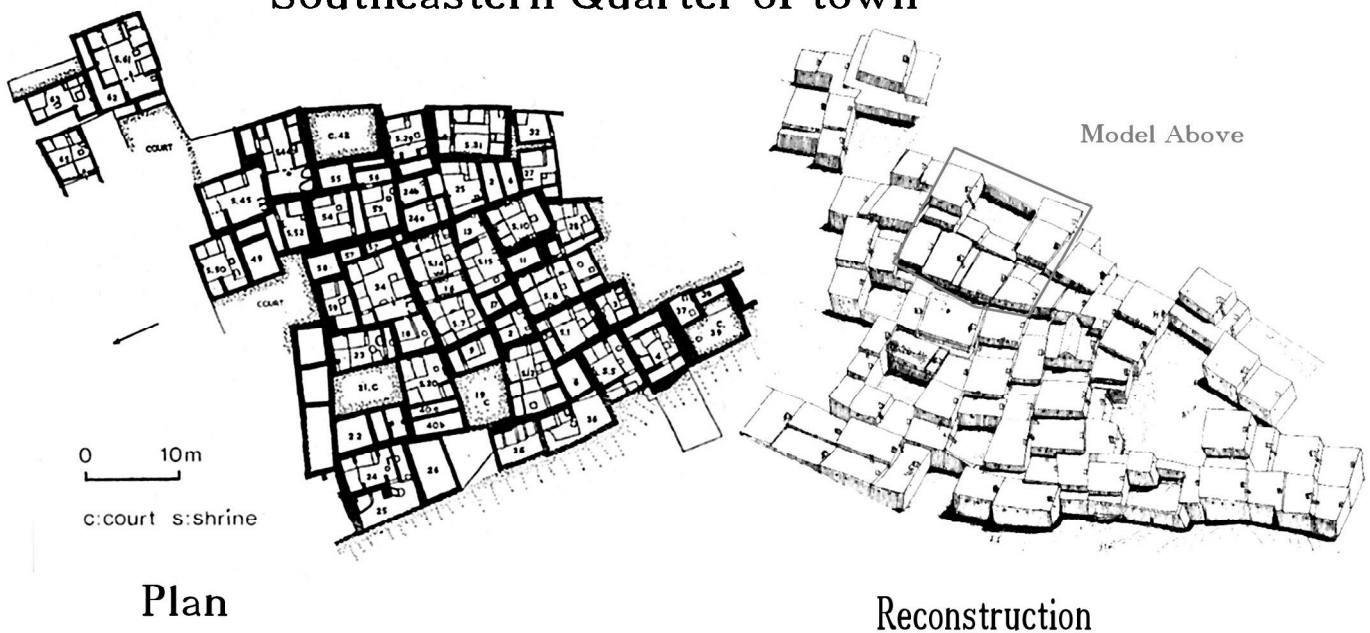
Scale approx. 1:185

approx 26m



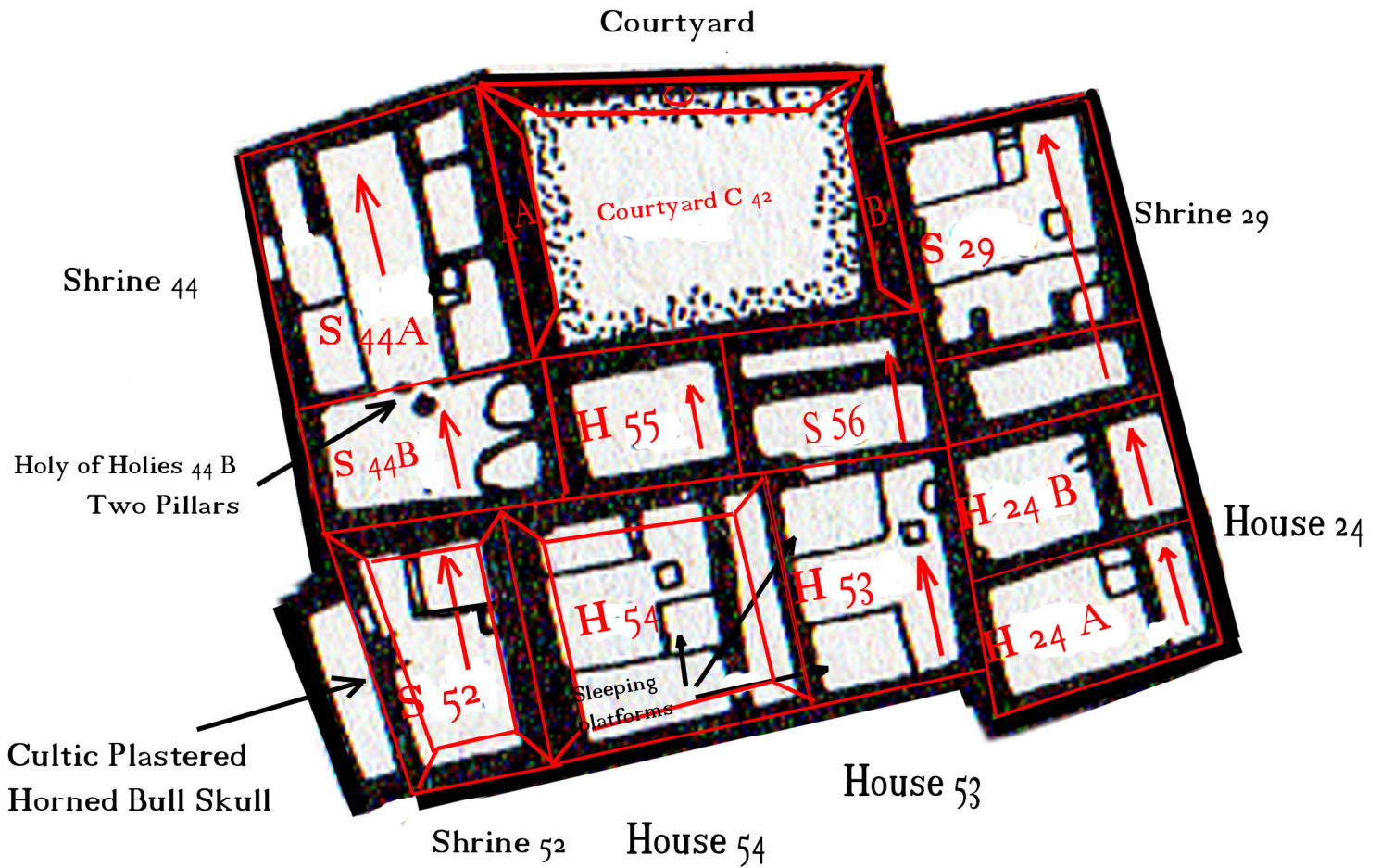
Note: Wall thicknesses not to scale  
Minor liberties taken to simplify construction

### Southeastern Quarter of town



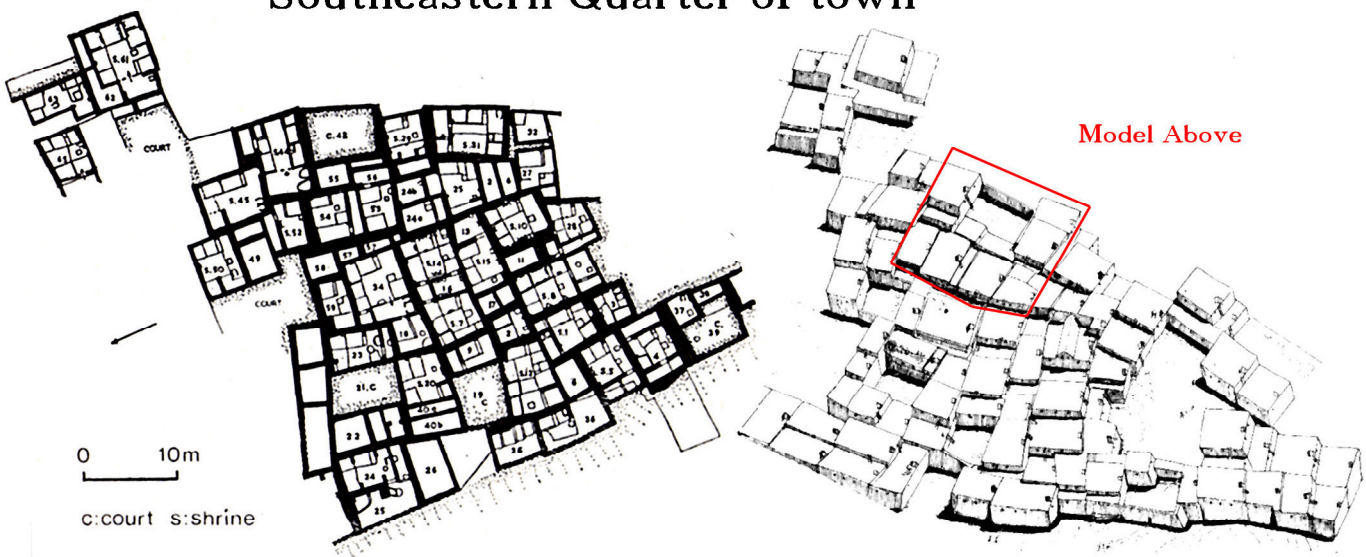
Scale approx. 1:185

approx 26m



Note: Wall thicknesses not to scale  
Minor liberties taken to simplify construction

### Southeastern Quarter of town

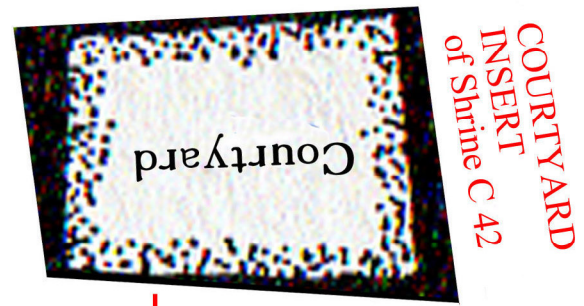


Plan

Reconstruction



SCORE BETWEEN  
"-" marks.  
Fold ALL TABS  
& Walls DOWN



COURTYARD  
INSERT  
of Shrine C 42

S = a Shrine  
H = a House

S<sub>44a</sub> →

Floor of S<sub>52</sub>

SS H ↓

S<sub>44b</sub> ↓

H<sub>56</sub> ↑

S = a Shrine  
H = a House

Fold ALL TABS & Walls  
DOWN

Shrine S52 fold tabs UP so bull head INSIDE



H 54 floor INSERT

H 54 fold tabs  
DOWN

H<sub>54</sub>

Courtyard C42 fold tabs DOWN

SCORE BETWEEN  
 "-" marks.  
 Fold ALL TABS  
 & Walls DOWN

S = a Shrine  
 H = a House

ladders

S = a Shrine  
 H = a House

ladders

S<sub>29</sub>

H<sub>24 B</sub>

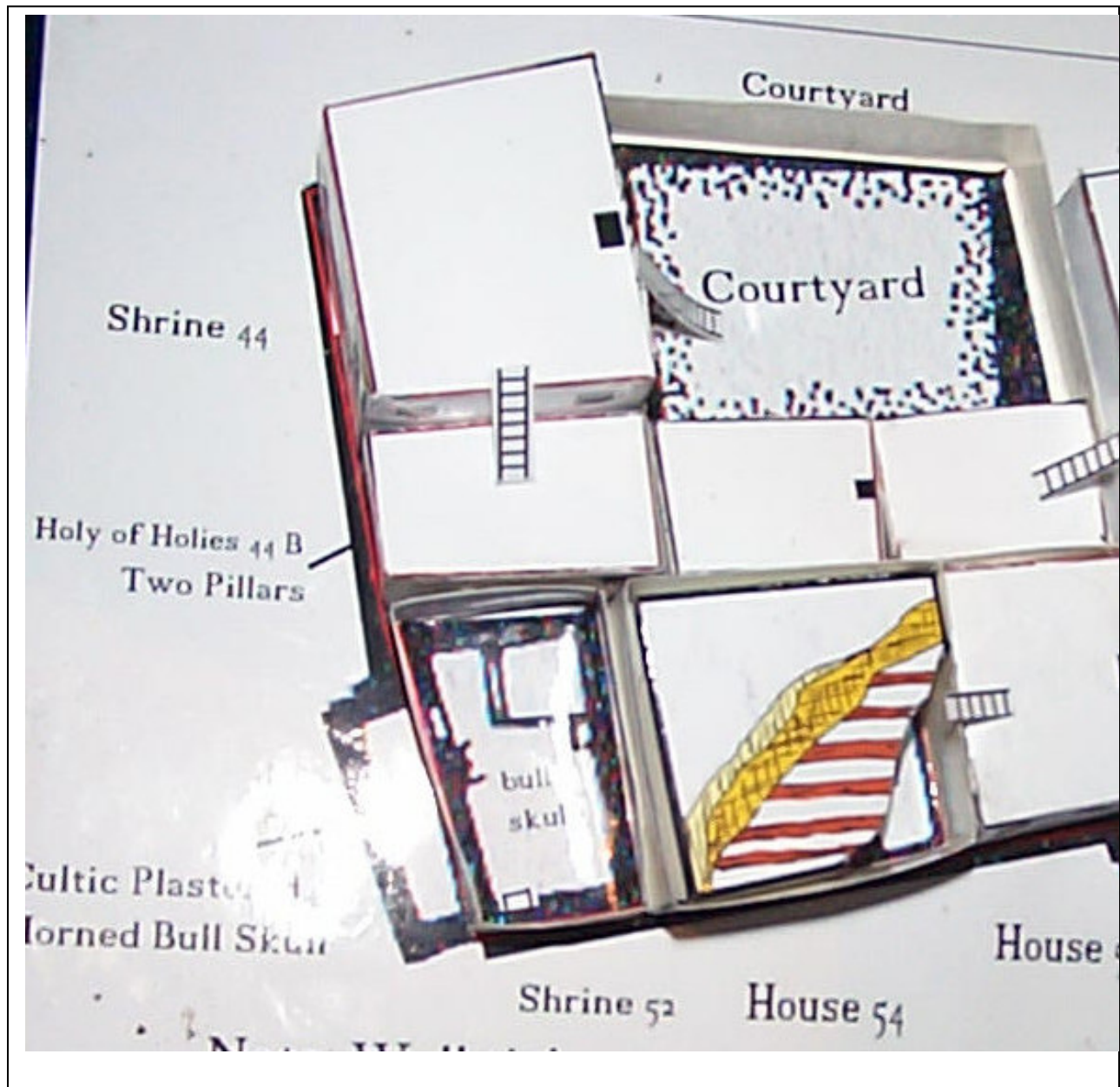
S = a Shrine  
 H = a House

H<sub>24 A</sub>

H<sub>53</sub>

Cut  
 out

Removeable ROOF  
 of House H 54



## PRINTING INSTRUCTIONS FOR Neolithic Village Çatal Hüyük

### 1. To Print the Black & White model

Make sure your printer is set to the A4 page size

Set printer to **BLACK**

Set printer to *high resolution* e.g. *Photo setting* if you are using the print-out as masters for duplication



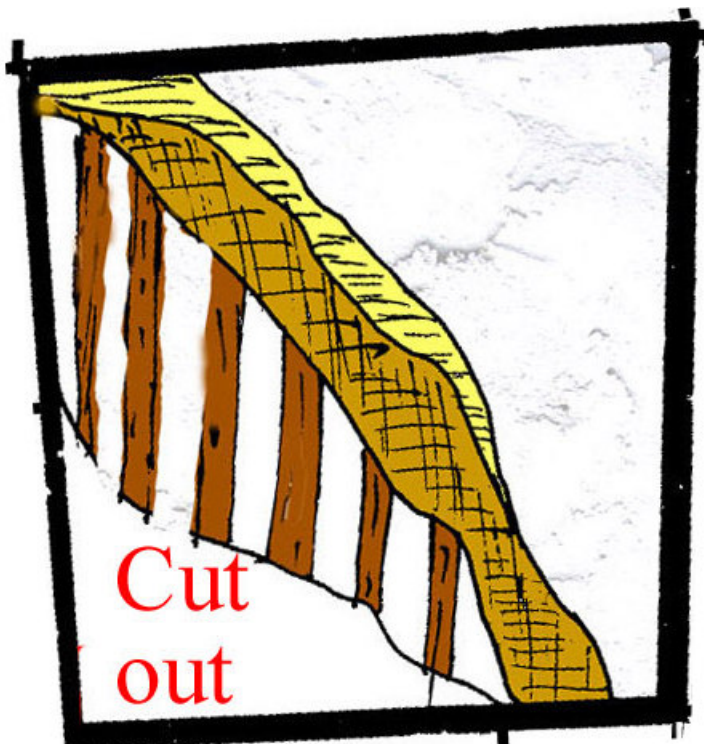
**Print the base on BUFF or GREEN light cover-board at least 180 gsm in weight**

**Print Pages 2 &3 on white card**

**If PAINTING the model be sure to do so before assembly and MAKE SURE NOT TO GET THE MODEL TOO WET. LET model DRY THOROUGHLY before assembly. Walls & Roofs of the houses were plastered and whitewashed, so there is no real need to them**

**Paint the ROOF of House 54 the colours below to represent the timber beams, cross-hatched branches, straw and covering plaster.**

**Roof of House H 54**



**2.To Print the colour model**

**Make sure your printer is set to the A4 page size**

**Set printer to COLOUR**

**Set printer to *high resolution* i.e. *Photo setting***

**Print the model base on *Green or BUFF* card**

**Print pages 1 & 2 on WHITE light cover-board at least 180 gsm in weight 250 gsm is ideal.**



## CONSTRUCTION INSTRUCTIONS

1. **Tools** needed: cutting board, newspaper, cutting knife, scissors, ruler, **glue stick** (liquid glue will ruin the model) such as UHU, clothes pegs (for clamps).
2. Glue the Base to heavy card.
3. Using a blunt edge (e.g. A ball-point pen) score all fold lines of **Shrine S 44A**. Cut out the shrine. Fold the walls, roof, and base DOWN. GLUE tab at end of walls. When dry, fold roof down, glue the tabs. When dry fold and glue the base tabs. Set aside to dry.
4. Repeat for Shrine S 29, Shrine S44 B, Houses H 55, and H 56.
5. Glue S44A, S44B, S 29, H 55 and H 56 to the base. Make sure the arrows on the bases face to match those printed on the large model base.
6. Cut out the Courtyard C 42, folding tabs down. Glue to base; note the side walls extend between S 44B, H 55 and S 20, H 56.
7. Cut out Shrine S 52 folding walls UP so that the plastered bulls head mounted on the wall is on the INSIDE! Glue to MODEL BASE.
8. Repeat for House H 54 Ensure the wall with the three windows face to BOTTOM of the model base.

9. Fold and glue up Houses H53, H 24A, and H 24B. When dry, glue to model base.

10. Fold the Removable roof of House H 54 Colour as above if desired. Remove corner. Fold ALL TABS DOWN. DO NOT glue. Insert into House H 54; remove as desired to show inside of house.

11. Cut out several ladders and glue as PHOTO above by gluing to edges of the houses and at the bottom of the ladder as well.

12. Cut out the Courtyard insert C42, the FLOOR INSERTS H 54 and S 52. Trim as required and glue inside the corresponding structures.

13. Sprinkle modelling grass around the model if desired.

**All the best**

**Garry R. Stone**

Manager ARCHAEO-PRO, August 2009.